



The Business Class.

C Scheme, JAIPUR

Your Gateway to Success in Jaipur's Vibrant Commercial Core!

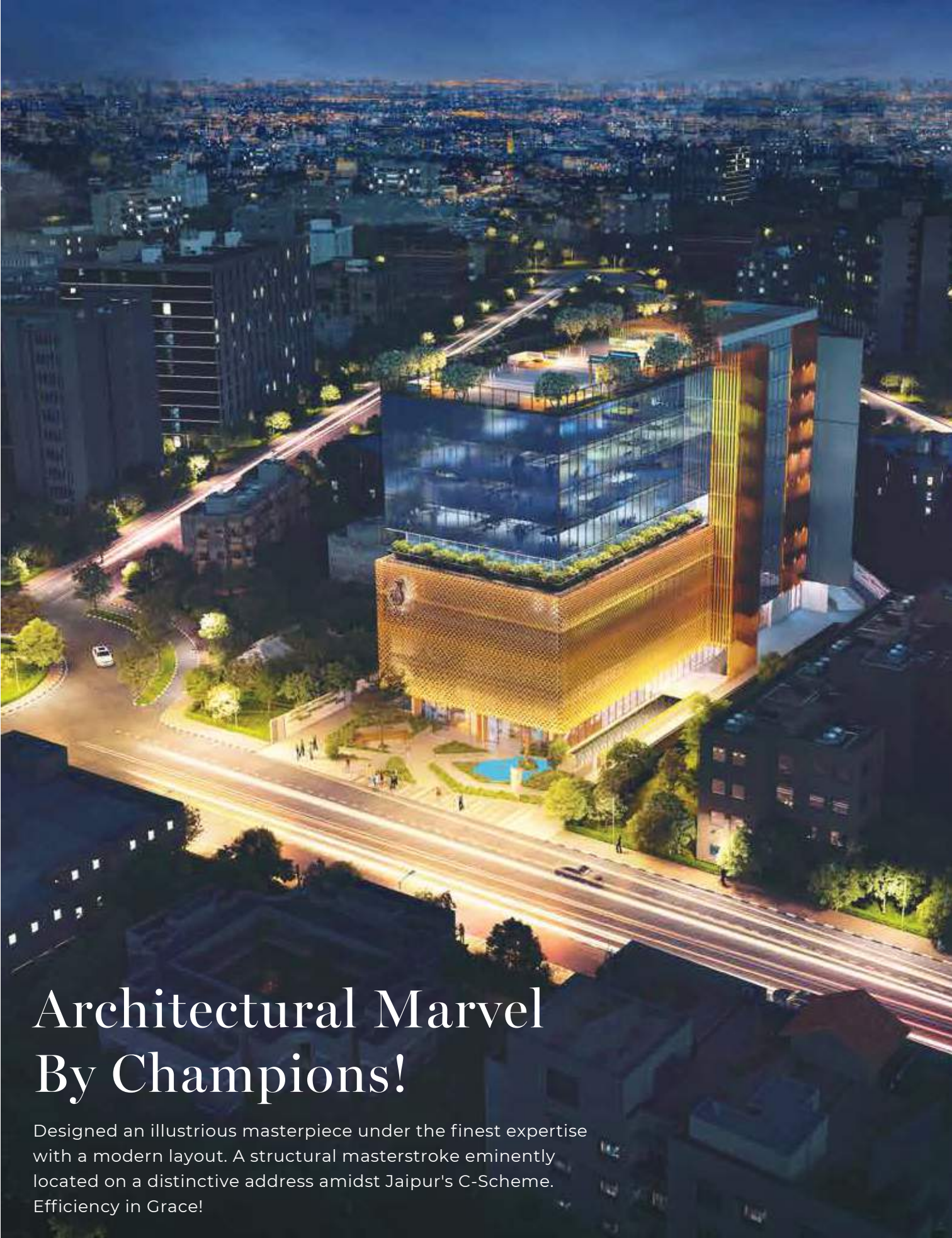
An aerial night photograph of Jaipur, India, showing a dense urban landscape with numerous lights from buildings and streets. A large, modern building complex is highlighted in the center, surrounded by greenery and parking areas. A white circular callout with a pin points to this central area.

C
SCHEME
JAIPUR

Impeccable Composition

The beautiful city Jaipur, has always been admired as an epitome of royalty with a tint of modernity. The cherry on the top to its richness is the ravishing outlook of Jewel Tower with the submerge of magnificent sleekness of convergent spaces. Donning Jaipur's C-Scheme with the modern architecture, Jewel Tower stands apart from the mainstream





Architectural Marvel By Champions!

Designed an illustrious masterpiece under the finest expertise with a modern layout. A structural masterstroke eminently located on a distinctive address amidst Jaipur's C-Scheme. Efficiency in Grace!

A proven space to enforce your persona in grandeur!

The arrival of Jewel Tower in C Scheme, Jaipur, heralds a moment of grandeur and good fortune.





JEWELLERS

KALYAN JEWELLERS

Retail Bliss in a Tranquil
Oasis of Lush Green Landscapes.



Modern architecture,
champions the pinnacle
of perfection



Sip, Savor,
Spark Inspiration.

Iconic Facade, Endless Impressions

Step into a realm where the pulse of triumph animates each venture, carving pathways to eminence, and weaving legacies that surpass time itself.



Height of Flavors, Where Bliss Converges



Spirit of success

Here, success isn't just an achievement;
it's a way of being, a mindset that fuels
every aspiration and every milestone.

Welcome to a realm where the spirit of
success breathes life into every endeavor,
forging pathways toward greatness, and
crafting legacies that transcend.

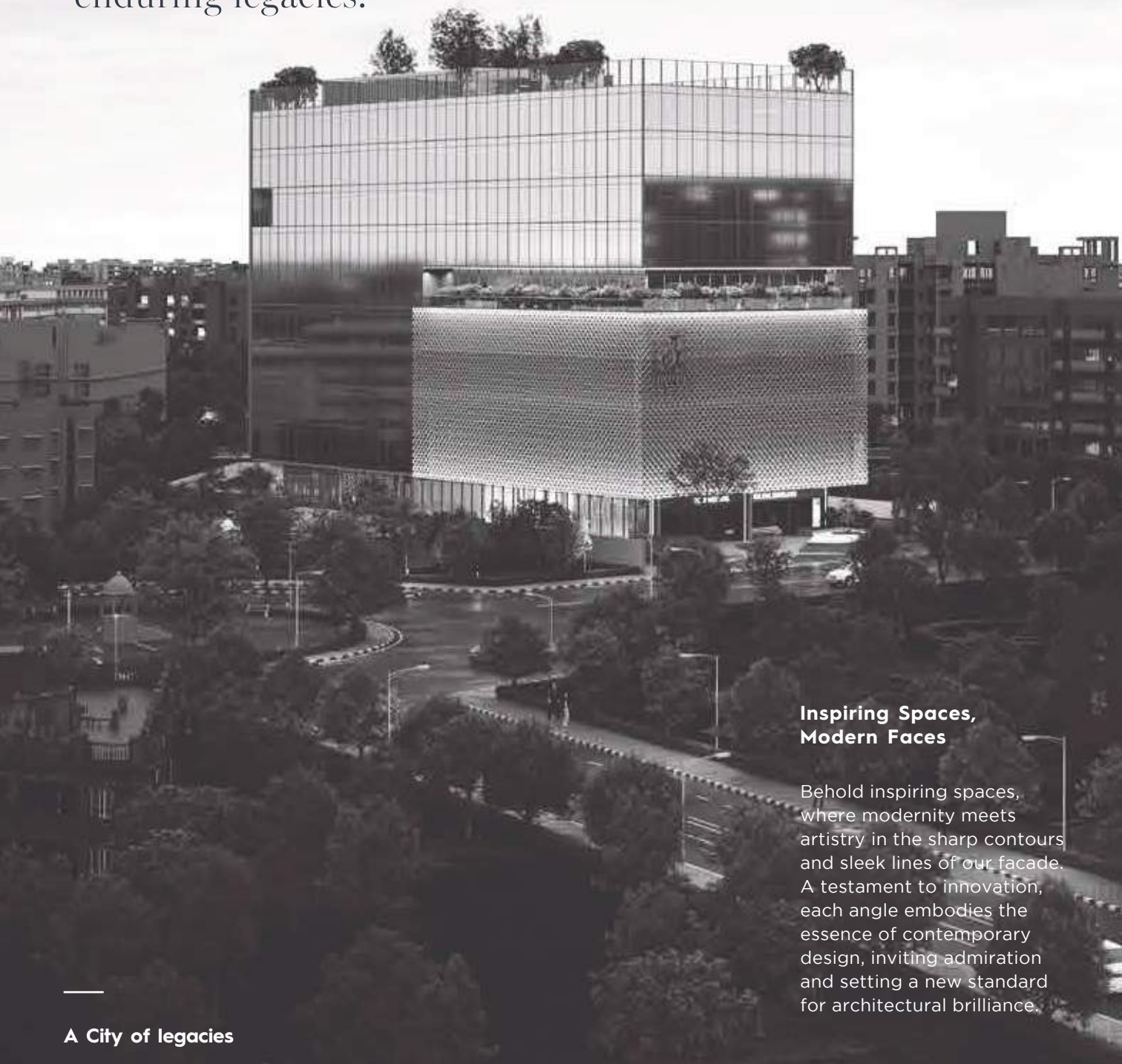


Culinary Heights, Spirited Delights

A tamed facade that provides a wider view to the city's skyline. A prominent feeling of being at the top of the world. Relish in the open-terrace dine-in space and encounter breath-taking cityscape.



Welcome to a city of legacies,
where the echoes of history
dance with the rhythm of
modernity. Embrace a city
where every corner holds a
story, and every step writes a
new chapter in the saga of
enduring legacies.



**Inspiring Spaces,
Modern Faces**

Behold inspiring spaces,
where modernity meets
artistry in the sharp contours
and sleek lines of our facade.
A testament to innovation,
each angle embodies the
essence of contemporary
design, inviting admiration
and setting a new standard
for architectural brilliance.



AN ARCHITECTURAL MARVEL WHICH IS FULLY QUADRANT FOR THE
'SUN' LOVERS AND SOMEONE HIGH-ON-LIGHT. A SPACE THAT
EMBRACES SUNLIGHT FROM ALL SIDES THROUGHOUT THE DAY.

THE ELITENESSS OF THE OFFICE SPACE MEASURES THE
PREMIUMNESS OF A CLASS-LEADING A CORPORATE SECTION. A
PLACE THAT DEFINES A STATUS MATCHING THE WORLD'S
GRANDEUR.



Summit of Euphoria

Jewel Tower: a symphony of past triumphs and future possibilities. Every street corner, every monument, whispers tales of resilience, creativity, and bold ambitions. It's a living testament to the pioneers who shaped its foundation and the visionaries who continue to carve new paths.

Opulence in Conference

The epitome of refined sophistication, where every detail is meticulously crafted to elevate the art of business gatherings. Within these walls, luxury meets functionality, boasting state-of-the-art technology harmonized with lavish aesthetics.

Opulence in Conference isn't merely a room, It's a stage where success meets sophistication, igniting conversations that pave the way for groundbreaking achievements.

Refined Restful Space

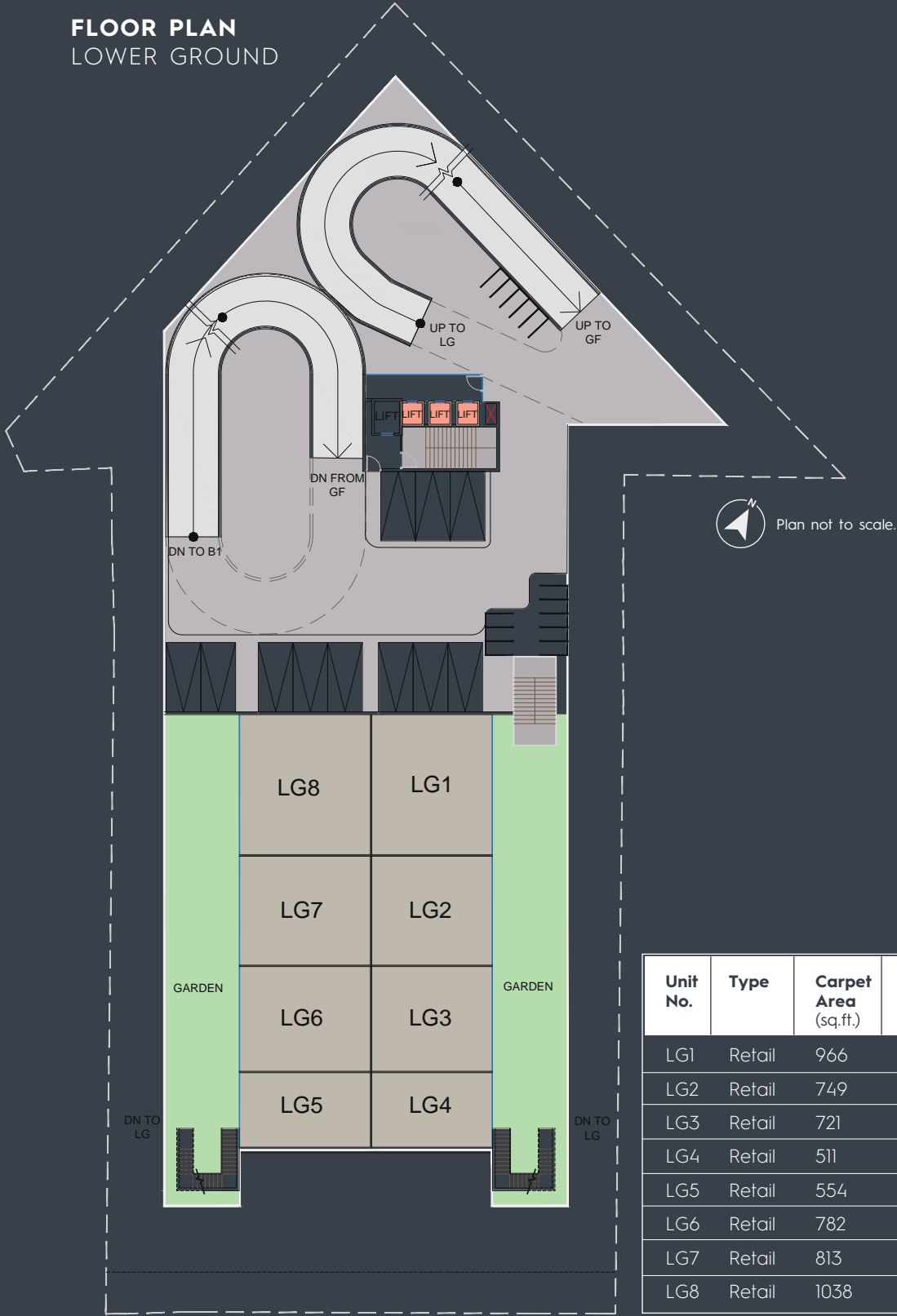
This enclave of luxury seamlessly blends lavish comfort with timeless design, offering a haven for relaxation and contemplation. Immerse yourself in an atmosphere meticulously curated for serenity, where every detail whispers elegance and every moment promises rejuvenation.



Office spaces adorned in
style efficiency redefined!



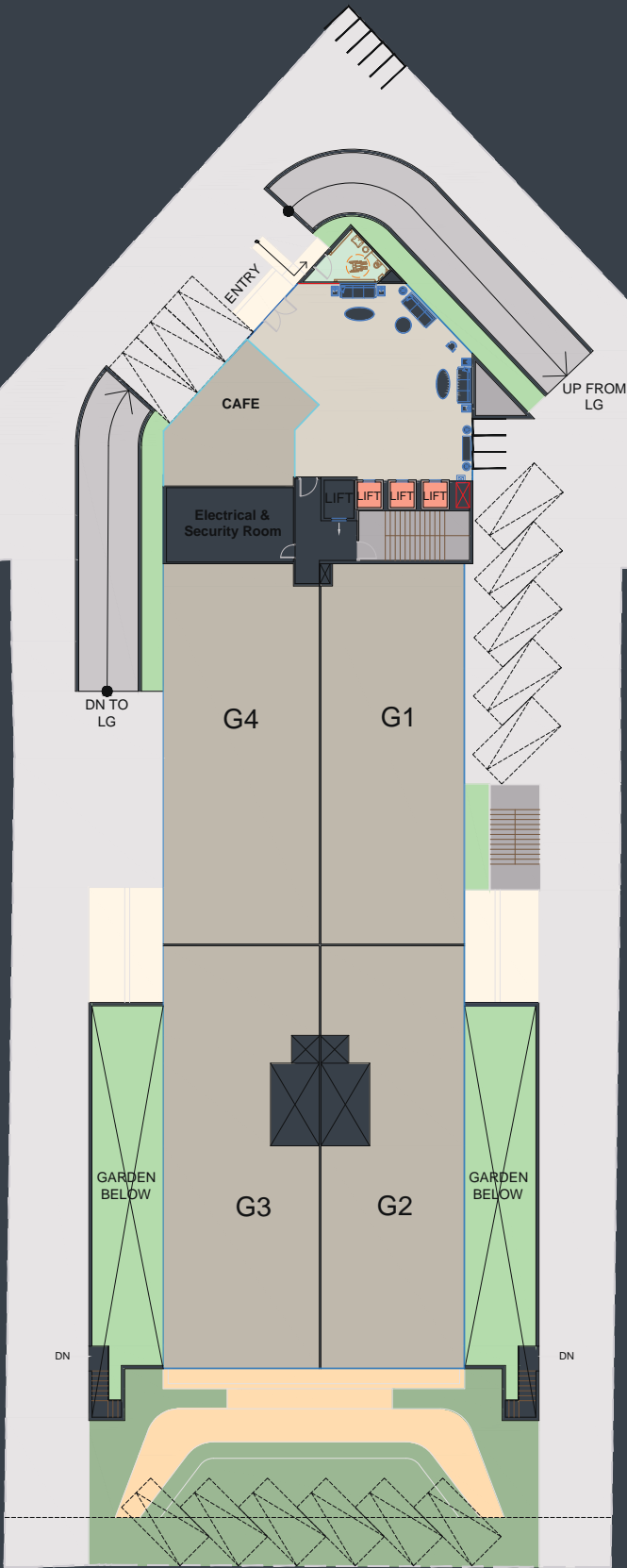
FLOOR PLAN
LOWER GROUND



Unit No.	Type	Carpet Area (sq.ft.)	Saleable Area (sq.ft.)	Dimensions (feet & inch)
LG1	Retail	966	1304	28'8"x33'8"
LG2	Retail	749	1011	28'8"x26'1"
LG3	Retail	721	973	28'8"x25'1"
LG4	Retail	511	690	28'8"x17'9"
LG5	Retail	554	748	31'2"x17'9"
LG6	Retail	782	1056	31'2"x25'1"
LG7	Retail	813	1098	31'2"x26'1"
LG8	Retail	1038	1401	31'2"x33'4"

FLOOR PLAN

GROUND FLOOR



Plan not to scale.

Unit No.	Type	Carpet Area (sq.ft.)	Saleable Area (sq.ft.)	Dimensions (feet & inch)
G1	Retail	2160	2916	28'8"x75'8"
G2	Retail	2415	3260	28'8"x84'1"
G3	Retail	2622	3540	31'2"x84'1"
G4	Retail	2339	3158	31'2"x75'10"
Café	Retail	594	802	31'2"x17'5"

FLOOR PLAN

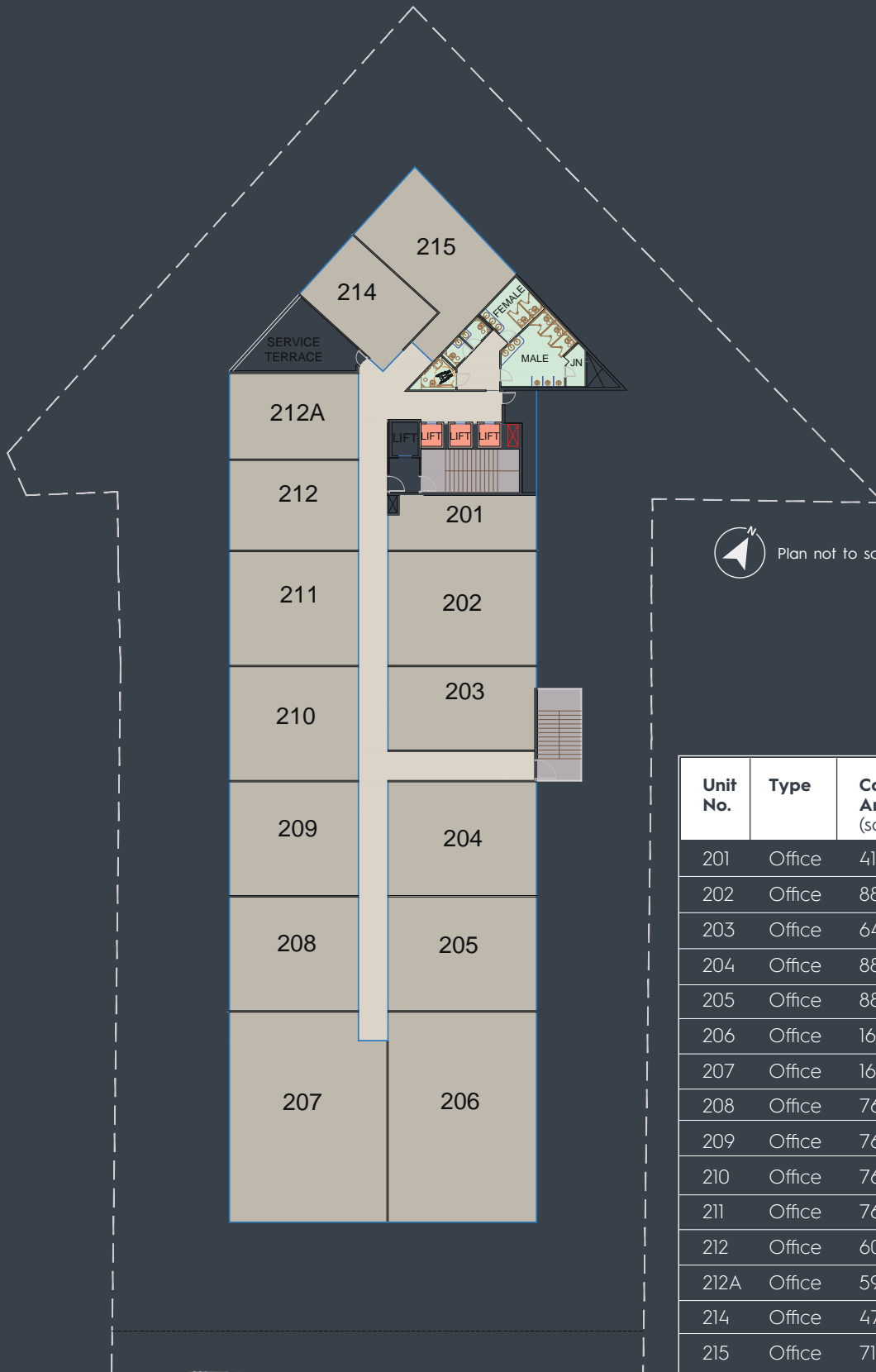
FIRST FLOOR



Plan not to scale.

Unit No.	Type	Carpet Area (sq.ft.)	Saleable Area (sq.ft.)	Dimensions (feet & inch)
101	Office	412	556	33'10"x13'
102	Office	881	1189	33'10"x26'1"
103	Office	648	875	33'10"x19'2"
104	Office	881	1189	33'10"x26'1"
105	Office	881	1189	33'10"x26'1"
106	Office	1615	2180	33'10"x47'10"
107	Office	1674	2260	35'11"x47'10"
108	Office	766	1034	29'4"x26'1"
109	Office	766	1034	29'4"x26'1"
110	Office	766	1034	29'4"x26'1"
111	Office	766	1034	29'4"x26'1"
112	Office	606	818	29'4"x20'8"
112A	Office	592	799	29'4"x20'2"
114	Office	479	647	18'3"x26'4"
115	Office	718	969	20'5"x33'4"

FLOOR PLAN SECOND FLOOR



Unit No.	Type	Carpet Area (sq.ft.)	Saleable Area (sq.ft.)	Dimensions (feet & inch)
201	Office	412	556	33'10"x13'
202	Office	881	1189	33'10"x26'1"
203	Office	648	875	33'10"x19'2"
204	Office	881	1189	33'10"x26'1"
205	Office	881	1189	33'10"x26'1"
206	Office	1615	2180	33'10"x47'10"
207	Office	1674	2260	35'11"x47'10"
208	Office	766	1034	29'4"x26'1"
209	Office	766	1034	29'4"x26'1"
210	Office	766	1034	29'4"x26'1"
211	Office	766	1034	29'4"x26'1"
212	Office	606	818	29'4"x20'8"
212A	Office	592	799	29'4"x20'2"
214	Office	479	647	18'3"x26'4"
215	Office	718	969	20'5"x33'4"

FLOOR PLAN THIRD FLOOR



Unit No.	Type	Carpet Area (sq.ft.)	Saleable Area (sq.ft.)	Dimensions (feet & inch)
301	Office	412	556	33'10"x13'
302	Office	881	1189	33'10"x26'1"
303	Office	648	875	33'10"x19'2"
304	Office	881	1189	33'10"x26'1"
305	Office	881	1189	33'10"x26'1"
306	Office	1615	2180	33'10"x47'10"
307	Office	1674	2260	35'11"x47'10"
308	Office	766	1034	29'4"x26'1"
309	Office	766	1034	29'4"x26'1"
310	Office	766	1034	29'4"x26'1"
311	Office	766	1034	29'4"x26'1"
312	Office	606	818	29'4"x20'8"
312A	Office	592	799	29'4"x20'2"
314	Office	479	647	18'3"x26'4"
315	Office	718	969	20'5"x33'4"

FLOOR PLAN FOURTH FLOOR



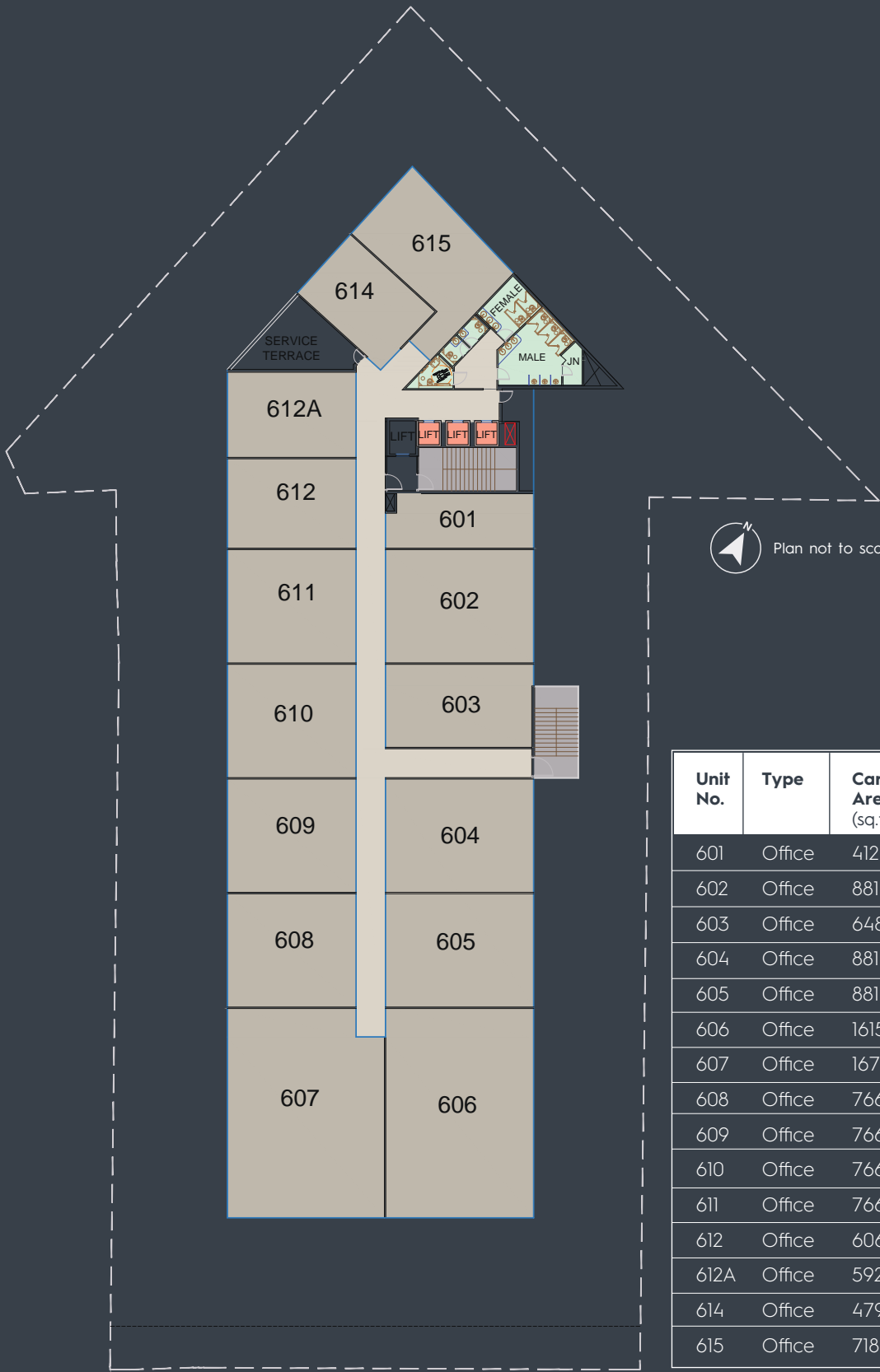
Unit No.	Type	Carpet Area (sq.ft.)	Saleable Area (sq.ft.)	Dimensions (feet & inch)
401	Office	412	556	33'10"x13'
402	Office	881	1189	33'10"x26'1"
403	Office	648	875	33'10"x19'2"
404	Office	881	1189	33'10"x26'1"
405	Office	881	1189	33'10"x26'1"
406	Office	1615	2180	33'10"x47'10"
407	Office	1674	2260	35'11"x47'10"
408	Office	766	1034	29'4"x26'1"
409	Office	766	1034	29'4"x26'1"
410	Office	766	1034	29'4"x26'1"
411	Office	766	1034	29'4"x26'1"
412	Office	606	818	29'4"x20'8"
412A	Office	592	799	29'4"x20'2"
414	Office	479	647	18'3"x26'4"
415	Office	718	969	20'5"x33'4"

FLOOR PLAN
FIFTH FLOOR



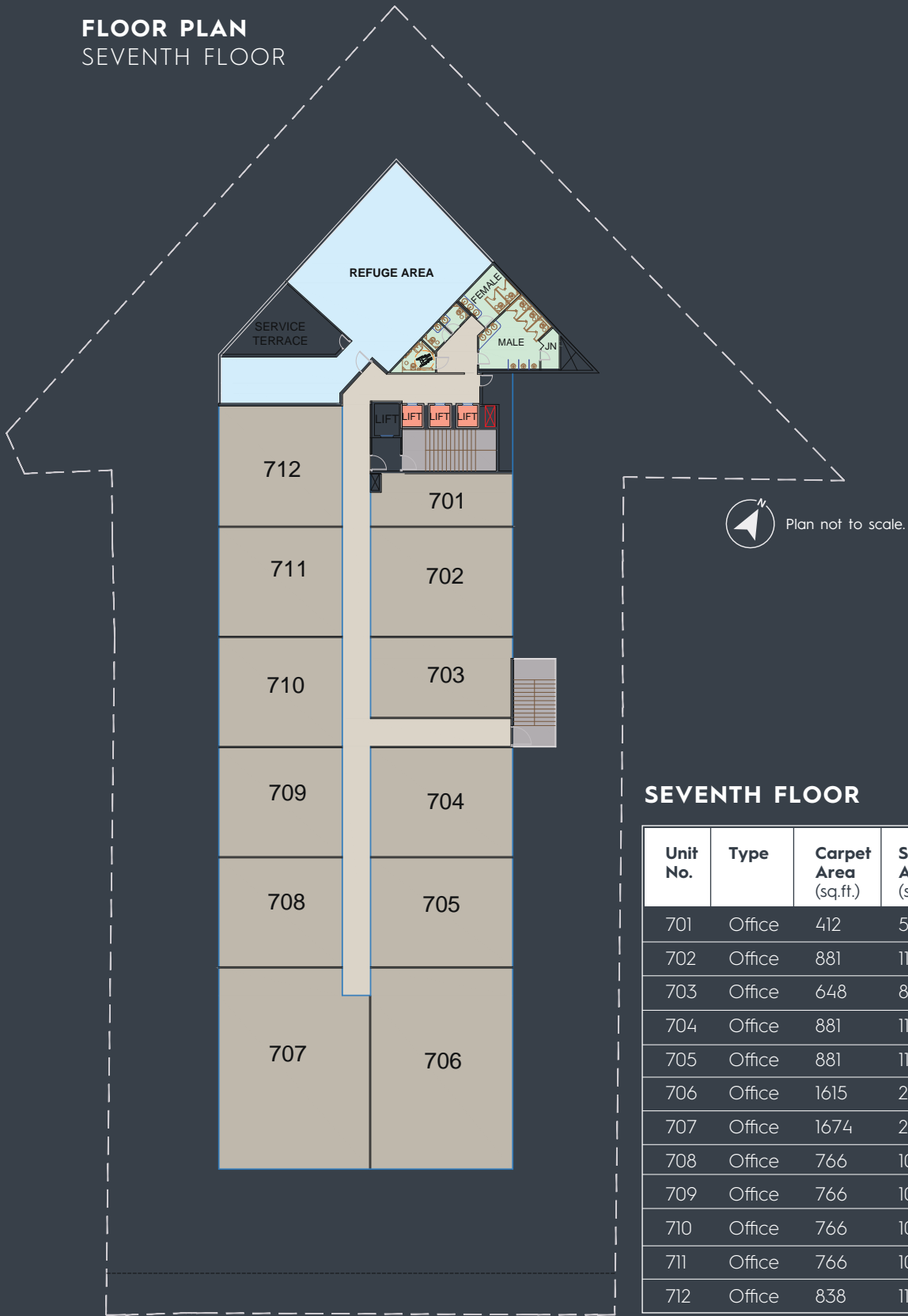
Unit No.	Type	Carpet Area (sq.ft.)	Saleable Area (sq.ft.)	Dimensions (feet & inch)
501	Office	412	556	33'10"x13'
502	Office	881	1189	33'10"x26'1"
503	Office	648	875	33'10"x19'2"
504	Office	753	1017	28'10"x26'1"
505	Office	753	1017	28'10"x26'1"
506	Office	1239	1673	28'11"x42'11"
507	Office	1286	1736	31'x42'11"
508	Office	638	861	24'5"x26'1"
509	Office	638	861	24'5"x26'1"
510	Office	766	1034	29'4"x26'1"
511	Office	766	1034	29'4"x26'1"
512	Office	606	818	29'4"x20'8"
512A	Office	592	799	29'4"x20'2"
514	Office	479	647	18'3"x26'4"
515	Office	718	969	20'5"x33'4"

FLOOR PLAN
SIXTH FLOOR



Unit No.	Type	Carpet Area (sq.ft.)	Saleable Area (sq.ft.)	Dimensions (feet & inch)
601	Office	412	556	33'10"x13'
602	Office	881	1189	33'10"x26'1"
603	Office	648	875	33'10"x19'2"
604	Office	881	1189	33'10"x26'1"
605	Office	881	1189	33'10"x26'1"
606	Office	1615	2180	33'10"x47'10"
607	Office	1674	2260	35'11"x47'10"
608	Office	766	1034	29'4"x26'1"
609	Office	766	1034	29'4"x26'1"
610	Office	766	1034	29'4"x26'1"
611	Office	766	1034	29'4"x26'1"
612	Office	606	818	29'4"x20'8"
612A	Office	592	799	29'4"x20'2"
614	Office	479	647	18'3"x26'4"
615	Office	718	969	20'5"x33'4"

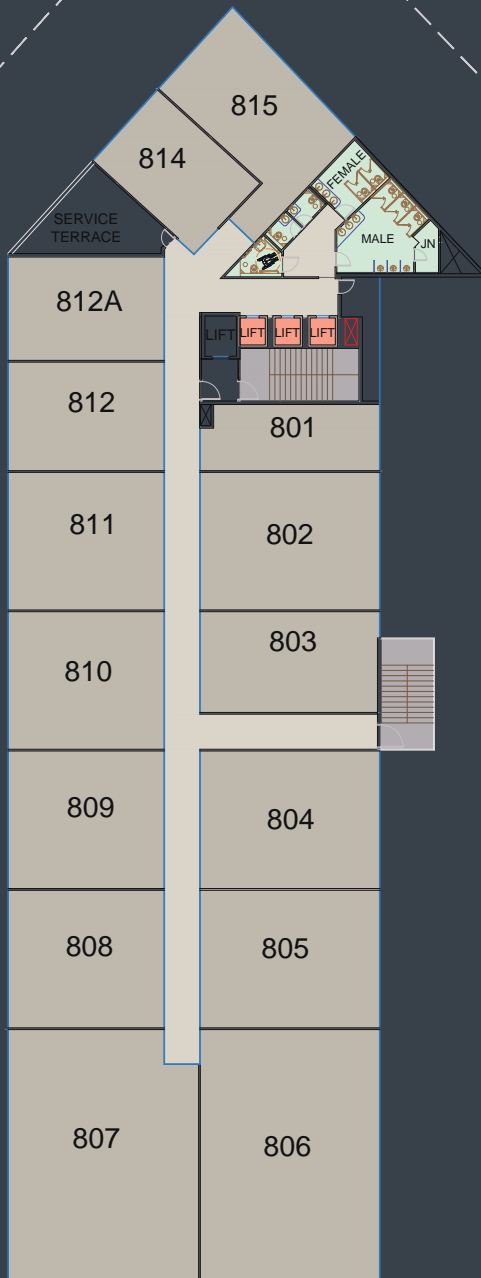
FLOOR PLAN SEVENTH FLOOR



SEVENTH FLOOR

Unit No.	Type	Carpet Area (sq.ft.)	Saleable Area (sq.ft.)	Dimensions (feet & inch)
701	Office	412	556	33'10"x13'
702	Office	881	1189	33'10"x26'1"
703	Office	648	875	33'10"x19'1"
704	Office	881	1189	33'10"x26'1"
705	Office	881	1189	33'10"x26'1"
706	Office	1615	2180	33'10"x47'10"
707	Office	1674	2260	35'11"x47'10"
708	Office	766	1034	29'4"x26'1"
709	Office	766	1034	29'4"x26'1"
710	Office	766	1034	29'4"x26'1"
711	Office	766	1034	29'4"x26'1"
712	Office	838	1131	29'4"x28'7"

FLOOR PLAN EIGHTH FLOOR

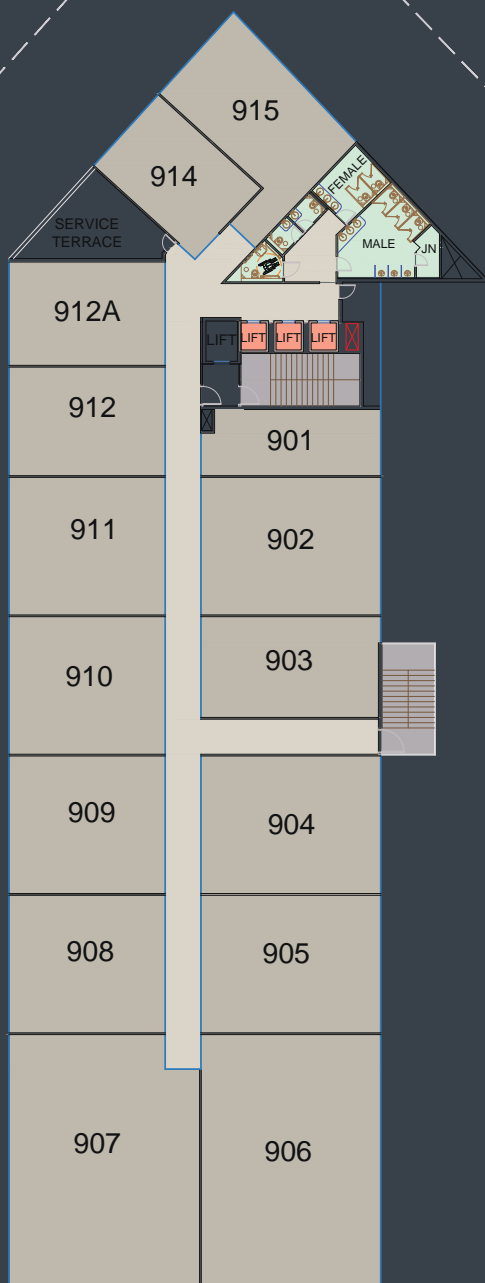


Plan not to scale.

EIGHTH FLOOR

Unit No.	Type	Carpet Area (sq.ft.)	Saleable Area (sq.ft.)	Dimensions (feet & inch)
801	Office	412	556	33'10"x13'
802	Office	881	1189	33'10"x26'1"
803	Office	648	875	33'10"x19'2"
804	Office	881	1189	33'10"x26'1"
805	Office	881	1189	33'10"x26'1"
806	Office	1615	2180	33'10"x47'10"
807	Office	1674	2260	35'11"x47'10"
808	Office	766	1034	29'4"x26'1"
809	Office	766	1034	29'4"x26'1"
810	Office	766	1034	29'4"x26'1"
811	Office	766	1034	29'4"x26'1"
812	Office	606	818	29'4"x20'8"
812A	Office	592	799	29'4"x20'2"
814	Office	479	647	18'3"x26'4"
815	Office	718	969	20'5"x33'4"

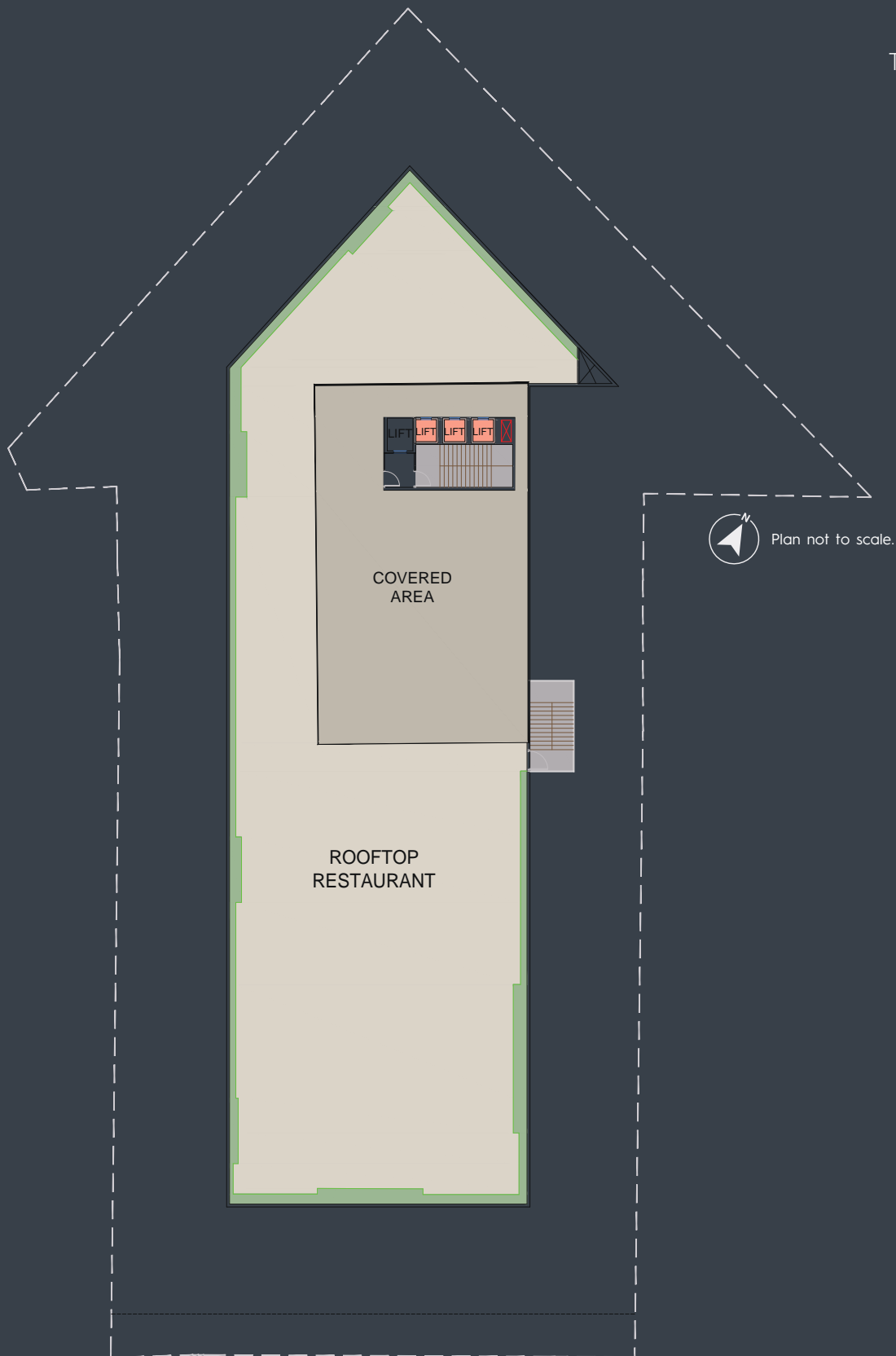
FLOOR PLAN NINTH FLOOR



Plan not to scale.

Unit No.	Type	Carpet Area (sq.ft.)	Saleable Area (sq.ft.)	Dimensions (feet & inch)
901	Office	412	556	33'10"x13'
902	Office	881	1190	33'10"x26'1"
903	Office	648	875	33'10"x19'2"
904	Office	881	1190	33'10"x26'1"
905	Office	881	1190	33'10"x26'1"
906	Office	1615	2180	33'10"x47'10"
907	Office	1674	2259	35'11"x47'10"
908	Office	766	1034	29'4"x26'1"
909	Office	766	1034	29'4"x26'1"
910	Office	766	1034	29'4"x26'1"
911	Office	766	1034	29'4"x26'1"
912	Office	606	818	29'4"x20'8"
912A	Office	592	800	29'4"x20'2"
914	Office	479	647	18'3"x26'4"
915	Office	718	969	20'5"x33'4"

FLOOR PLAN
TERRACE FLOOR



SUCCESS STORIES



Mr. AK Aggarwal
OFFICE - HORIZON TOWER

“ We are into manufacturing business and we shifted here 25 years back. As per the Horizon Tower is concerned, it is situated at the best locations of Jaipur. There is no other better place than this. Excellent location and I am satisfied! ”



Mr. Laxmikant Sarda
OFFICE - HORIZON TOWER

“ I have been living in JOI and that was our first good decision we have made to choose that property. The whole experience from booking until delivery was very smooth. I think that is one thing best about Suncity. ”



Mrs. Savitri Wadhvani
RESIDENT - JEWEL OF INDIA

“ Jewel of India is one of the best project in Jaipur. After moved to JOI, I am having a peaceful life because of the surroundings, safety, greenery and the environment. I feel very good at JOI and the kind of Experience I am having now, I will definitely recommend in our friends and relatives. ”



Mrs. Sejal dakania & Mrs. Manisha dakania
RESIDENT - JEWEL OF INDIA

“ We love the feature of massage room, it's good. We have used every feature be it library, cafe, pool and sauna everything and we enjoy each and every part of it. It's very beautiful and tidy. There is a word called elite, I call it elite. ”

Scan the QR code to
review the Glory !



SUCCESS STORIES



Mr. Alpesh Rawal

OFFICE - HORIZON TOWER

“ The location of the tower is wonderful, the proximity to the airport, the proximity to all the commercial landscapes is phenomenal here. It is one of the best looking towers in the entire city. I am very-very impressed with the quality of construction. ”



Mr. Rishabh Jain

OFFICE - HORIZON TOWER

“ I have been consistently impressed with the professionalism and the dedication demonstrated by the management team. The commitment to maintain the highest standard of services has truly set Horizon Tower apart from any other commercial property in Jaipur. ”



Ms. Khushi Chawla

RESIDENT - PARIKRAMA

“ It is a dream come true to live in Suncity. It is a perfect place to live your whole dream. Suncity has each & every facility you just name it. Be it restaurants, be it green belt, small food joints, it has everything within. ”



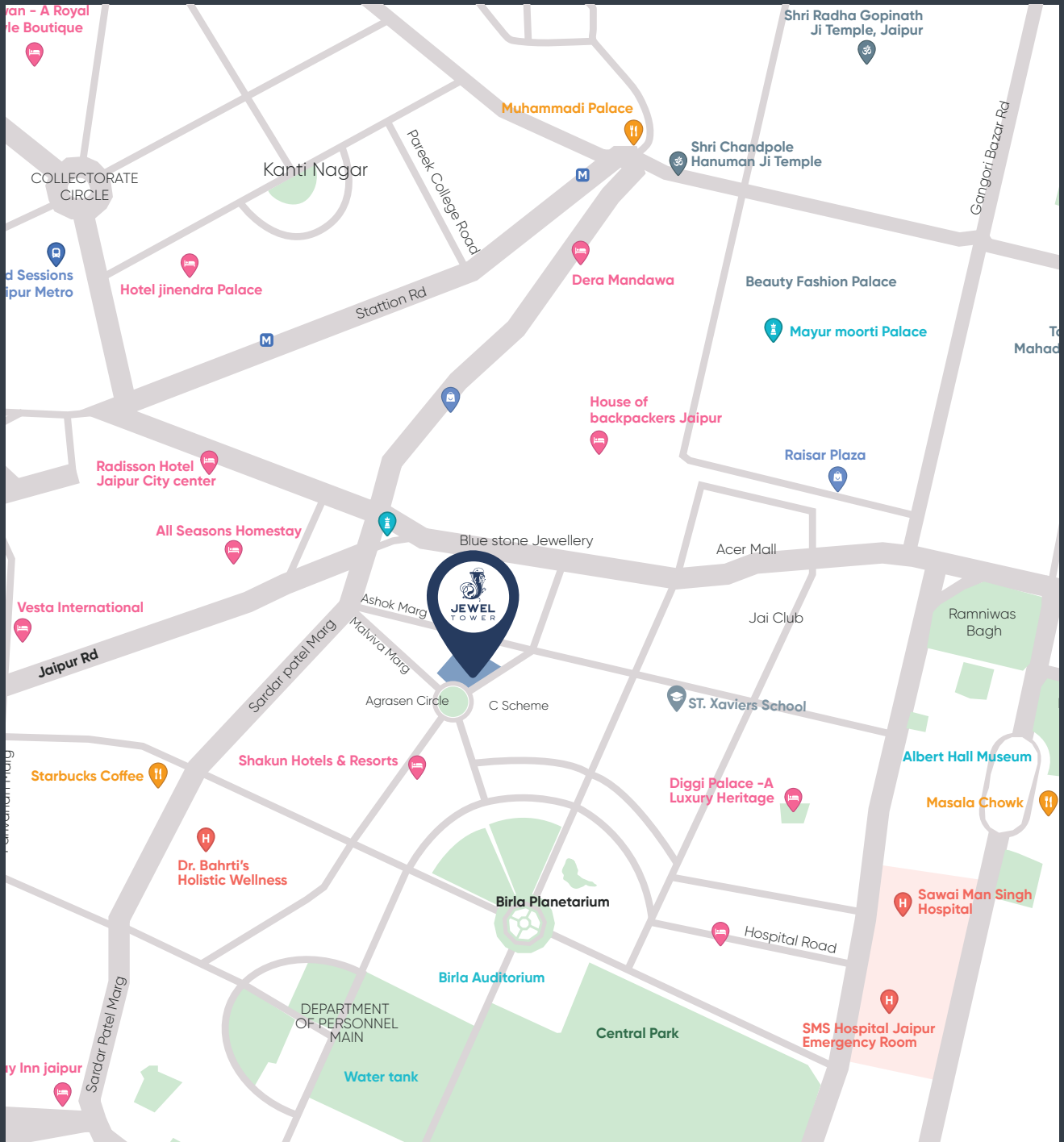
Mrs. Ashima

RESIDENT - PARIKRAMA

“ The impeccable standard of living, the world-class infrastructure, mesmerizing lounge, everything is so well-maintained in Suncity, that we ultimately decided to buy a flat here that turned out to be our home. Fortunately, the staff here is excellent & courteous. ”

Scan the QR code to
review the Glory !





A location connecting lavish comfort

A centrally enriched location in lush greens surrounded by top-notch social emplacements within the boundaries. Relish your zen in the uncontaminated surroundings and experience the delight of being in pure form. Withhold the pride of living in the area circumferenced by ravishing placements.

Marked its victory in the commercial world!



HORIZON TOWER

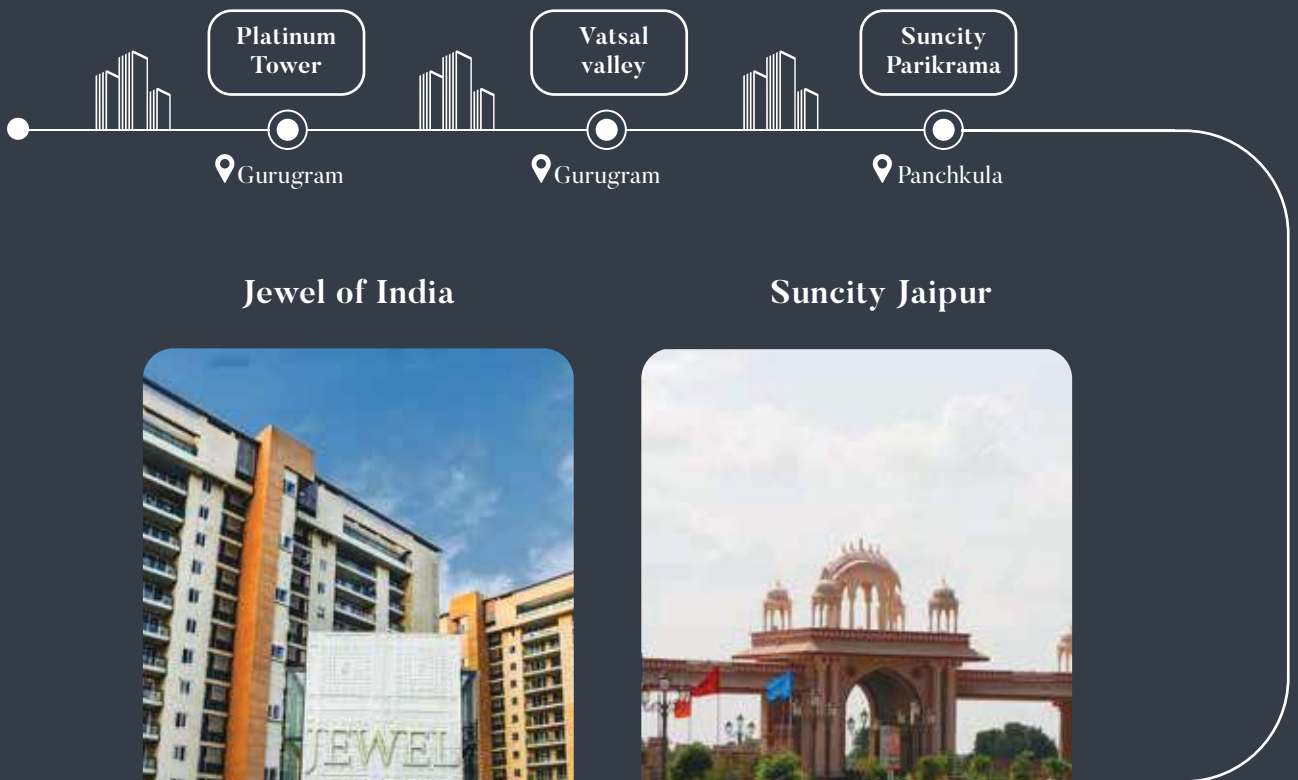
Curated with top-notch brands



many more to join!



Majestically delivered



Jewel of India



JAIPUR

Suncity Jaipur



JAIPUR



Triton Mall



📍 JAIPUR

Horizon Tower



📍 JAIPUR

Suncity
Anantam

📍 Vrindavan

Success
Tower

📍 Gurugram

Suncity
Heights

📍 Gurugram

And many more...

The Genius Behind the Marvel

Suncity Projects proudly aligns with the pinnacle of excellence, joining forces with NM Corp to craft an architectural masterpiece that stands as a testament to brilliance. The ethereal design epitomizes the genius behind its creation a tapestry woven by the unparalleled expertise of The Nikita Mehta. A luminary in her field, The Nikita Mehta, a revered architect, spearheaded the monumental **Jio World Centre** project for Reliance Industries, a testament to her exceptional prowess. Her name echoes across the highest echelons of architectural acclaim, adorned with a plethora of industry accolades. With 14 years of experience illuminating multidimensional projects worldwide, Suncity embraces the pinnacle of architectural finesse in every stroke of her design.

Nikita Mehta

(Founder - NM Corp)



FOOTPRINTS IN INDIA UNTIL 2023

<

 2 LACS TRUST OF PEOPLE	 1 CR. SQ. MTR OF TIMELY DELIVERY	 14 CITIES IMPRINTS	 30+ YEARS OF LEGACY	 30+ PROJECTS OF EXPERIENCE
---	---	---	---	---





Project Developed By Suncity Project Pvt. Ltd.
RERA Reg. No. : RAJ/P/2023/2898

Jaipur Marketing Office-
1st Floor, Horizon Tower at Jewel of India, JLN Marg,
OPP- Jaipur stock exchange, Jaipur Raj-302018

Corp. Office : Suncity Business Tower, Second Floor, Golf
Course Road, Sector-54, Gurgaon -122002, Haryana
Ph. 0124-4691000 Fax : 0124-4691010

Regd. Office : Lgf-10, Vasant Square, Plot-A, Sec-B, Pocket-v,
Community Centre, Vasant Kunj, New Delhi-110070 (India)
Cin : U45201dl1996ptc083915

 99830 61888, 96106 91111

info@suncityprojects.com
www.suncityprojects.com

Disclaimer: All floor plans, layout plans, amenities, elevations and specifications are purely conceptual & illustrative and not a legal offering and are subject to necessary approvals from competent authorities; also are subject to change by the company/ architect or competent authority from time to time if so warranted by the circumstances. (1 Square meter = 10.7639 Square feet & 1 Hectare = 2.47105 Acre)

 Suncityprojectsofficial

 Suncityprojects

 Suncity-Projects

 Suncityprojectspvtltd